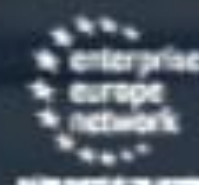


Jornada I+D+i

Oportunidades de financiación a la colaboración internacional > en I+D+i – INDUSTRIA

14 de febrero



Colabora:



GOBIERNO DE ESPAÑA

MINISTERIO DE CIENCIA E INNOVACIÓN



**Consejos para redactar un proyecto
desde el punto de vista de un experto
evaluador:**

Dra. Estibalitz Delgado

Industry & Mobility Division

TECNALIA



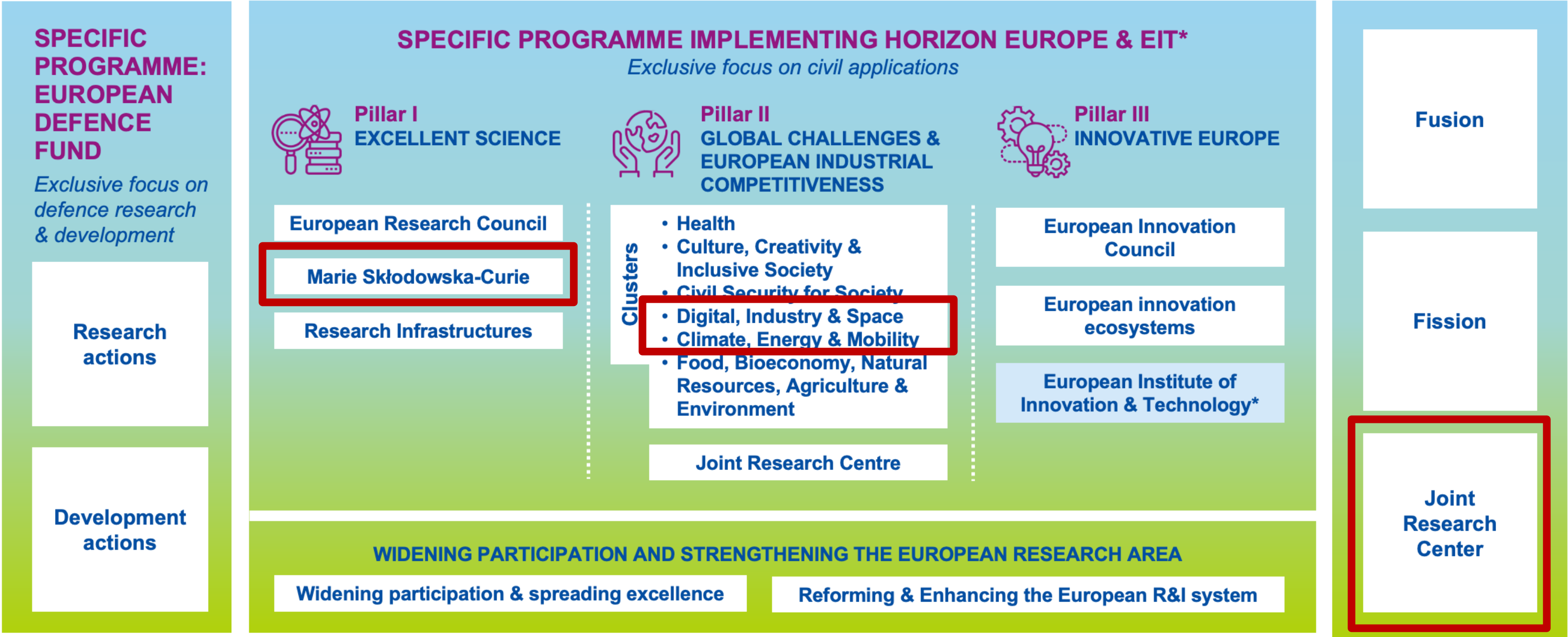
Experiencia evaluadora



PROGRAMA HORIZONTE EUROPA

HORIZON EUROPE

EURATOM



* The European Institute of Innovation & Technology (EIT) is not part of the Specific Programme





EXPERIENCIA EVALUADORA

Agencias:

- DG-CNECT: DG for Communication Networks, Contents, & Technology.
- HADEA: European Health & Digital Executive Agency.
- REA: European Research Executive Agency.
- JRC: Joint Research Center.

Programas:

- MSCA – RISE.
- H2020-ICT.
- HORIZON-CL4.
- DIGITAL-EUROPE.



HORIZON EUROPE

**CONCEPTOS ANTES DE PREPARAR
UNA PROPUESTA – ANTES DE
EVALUARLA**

PROGRAMA HORIZONTE EUROPA

- **Horizon Europe** se implementa a través de los **Programas de Trabajo** y en los cuales se buscan las oportunidades de financiación, a través de las **calls for proposals**.
- **Call for proposal** normalmente contiene uno o más **topics** dentro de una fecha de cierre común (**deadline**). El presupuesto de la llamada queda distribuido entre los **Tópicos**. Y las propuestas presentadas compiten entre sí, y se ordenan en una **ranking list** durante la evaluación.
- Applicants **aplican a una llamada y tópico específico**.
- Cada tópico incluye la siguiente description:
 - The topic **scope**
 - The topic **expected outcome**
 - The **expected impact** of the destination to which the topic belongs
 - The **type of action**
 - The topic **budget** (or budget shared by group of topics)



Link between policy priorities and project results

Strategic Planning and Programming (EC)

STRATEGIC PLAN

WORK PROGRAMME

EU POLICY PRIORITIES	Overall priorities of the European Union (Green Deal, Fit for the Digital Age,...)
KEY STRATEGIC ORIENTATIONS	Set of strategic objectives within the EC policy priorities where R&I investments are expected to make a difference
IMPACT AREAS	Group of expected impacts highlighting the most important transformation to be fostered through R&I
EXPECTED IMPACTS = DESTINATIONS	Wider long term effects on society (including the environment), the economy and science, enabled by the outcomes of R&I investments (long term). It refers to the specific contribution of the project to the work programme expected impacts described in the destination. Impacts generally occur some time after the end of the project.
EXPECTED OUTCOMES = TOPICS	The expected effects, over the medium term, of projects supported under a given topic. The results of a project should contribute to these outcomes, fostered in particular by the dissemination and exploitation measures. This may include the uptake, diffusion, deployment, and/or use of the project's results by direct target groups. Outcomes generally occur during or shortly after the end of the project.
PROJECT RESULTS	What is generated during the project implementation. This may include, for example, know-how, innovative solutions, algorithms, proof of feasibility, new business models, policy recommendations, guidelines, prototypes, demonstrators, databases and datasets, trained researchers, new infrastructures, networks, etc. Most project results (inventions, scientific works, etc.) are 'Intellectual Property', which may, if appropriate, be protected by formal 'Intellectual Property Rights'

PROJECT PROPOSALS

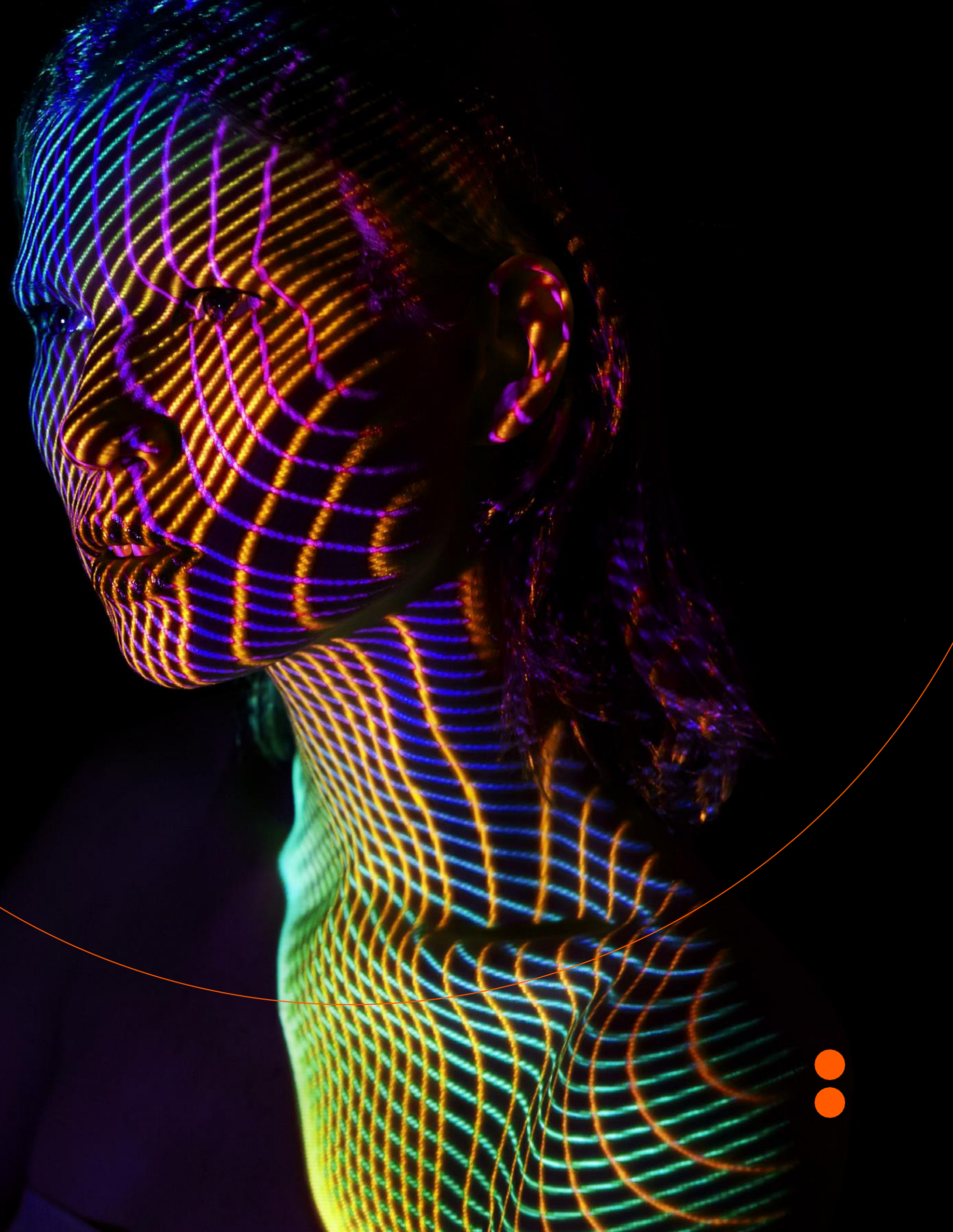
Application process (researchers)

GLOSARIO DE TÉRMINOS

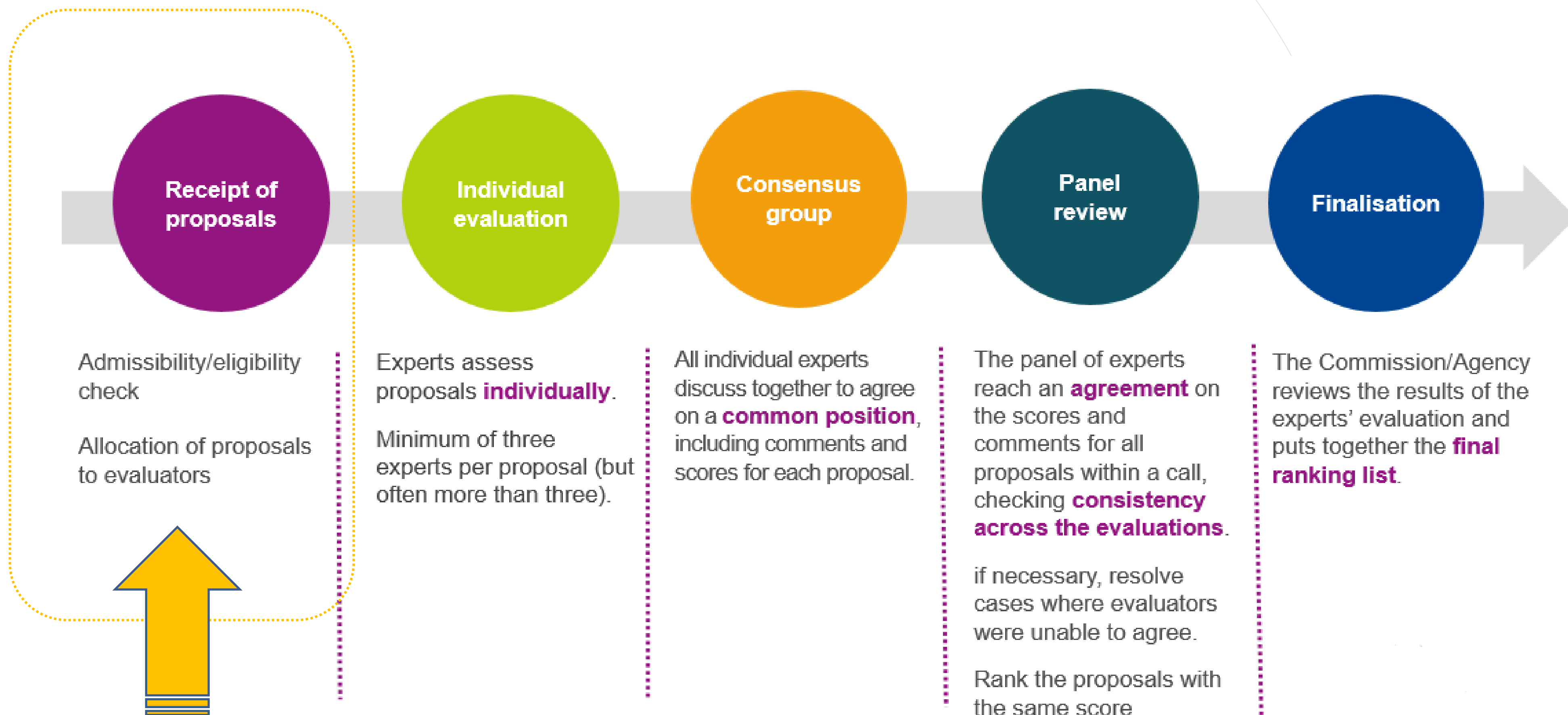
Impacts	Wider long term effects on society (including the environment), the economy and science, enabled by the outcomes of R&I investments (long term). It refers to the specific contribution of the project to the work programme expected impacts described in the destination. Impacts generally occur some time after the end of the project.
Objectives	The goals of the work performed within the project, in terms of its research and innovation content. This will be translated into the project's results. These may range from tackling specific research questions, demonstrating the feasibility of an innovation, sharing knowledge among stakeholders on specific issues. The nature of the objectives will depend on the type of action, and the scope of the topic.
Outcomes	The expected effects, over the medium term, of projects supported under a given topic. The results of a project should contribute to these outcomes, fostered in particular by the dissemination and exploitation measures. This may include the uptake, diffusion, deployment, and/or use of the project's results by direct target groups. Outcomes generally occur during or shortly after the end of the project.
Pathway to impact	Logical steps towards the achievement of the expected impacts of the project over time, in particular beyond the duration of a project. A pathway begins with the projects' results, to their dissemination, exploitation and communication, contributing to the expected outcomes in the work programme topic, and ultimately to the wider scientific, economic and societal impacts of the work programme destination.
Research output	Results generated by the action to which access can be given in the form of scientific publications, data or other engineered outcomes and processes such as software, algorithms, protocols and electronic notebooks.
Results	What is generated during the project implementation. This may include, for example, know-how, innovative solutions, algorithms, proof of feasibility, new business models, policy recommendations, guidelines, prototypes, demonstrators, databases and datasets, trained researchers, new infrastructures, networks, etc. Most project results (inventions, scientific works, etc.) are 'Intellectual Property', which may, if appropriate, be protected by formal 'Intellectual Property Rights'.

PROGRAMA HORIZONTE EUROPA

Proceso de Evaluación de una Propuesta



Proceso de Evaluación Standard



Chequeo de admisibilidad, elegibilidad y requisitos adición

Admissibility is checked by EU staff.

- Applications must be **complete** and contain all parts and mandatory annexes and supporting documents.
- Applications must be **readable, accessible and printable**.
- Applications must include a **plan for the exploitation and dissemination of results including communication activities** (n/a for applications at the first stage of two-stage procedures or unless otherwise provided in the specific call conditions).
- Specific **page limits** per type of action normally apply (specified in the topic conditions and controlled by IT tool).

Eligibility is checked by EU staff. If you spot an issue, please inform the EU staff.

- Eligible activities are the ones described in the call conditions.
- Minimum number of partners as set out in the call conditions (at least one independent legal entity established in a MS, and at least two other independent legal entities established either in a MS or AC).
- For calls with deadlines in 2022 and onwards participants that are public bodies, research organisations or higher education establishments from Members States and Associated countries must have a gender equality plan in place.
- Other criteria may apply on a call-by-call basis as set out in the call conditions. In few cases, the call conditions in the topic can modify the interpretation of criteria.

Chequeo previo de elegibilidad del consorcio



EU COUNTRIES

- Member States (MS) including their outermost regions.
- The Overseas Countries and Territories (OCTs) linked to the MS.



NON-EU COUNTRIES

- Countries associated to Horizon Europe (AC).
- Low and middle income countries: See [HE Programme Guide](#).
- Other countries when announced in the call or exceptionally if their participation is essential.



SPECIFIC CASES

- Affiliated entities established in countries eligible for funding.
- EU bodies
- International organisations (IO):
 - International European research organisations are eligible for funding.
 - Other IO are not eligible (only exceptionally if participation is essential)
 - IO in a MS or AC are eligible for funding for Training and mobility actions and when announced in the call conditions.

Chequeo previo de la elegibilidad de la actividad

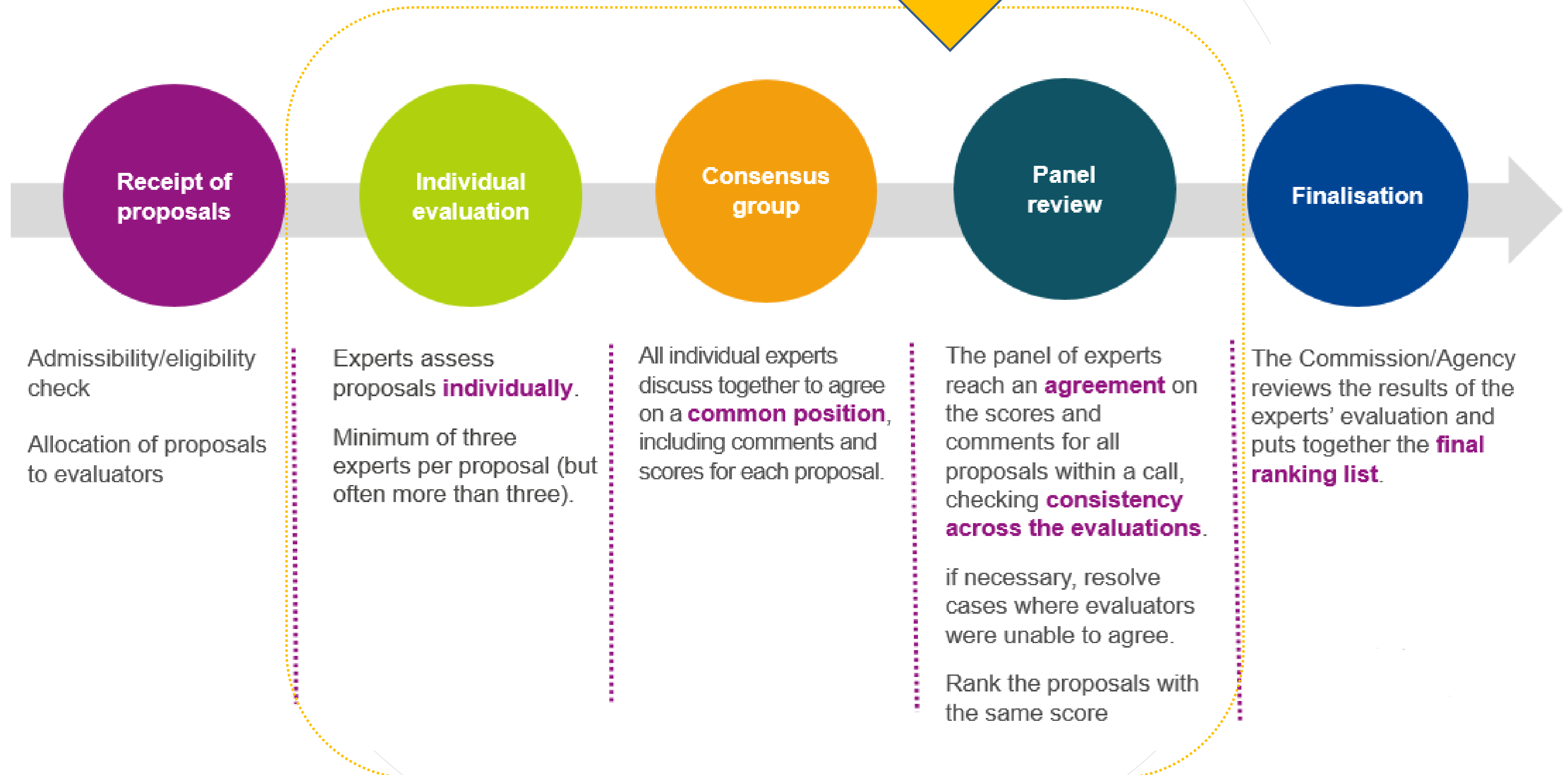


Eligible activities are the ones described in the call and topic conditions. The types of action include different activities eligible for funding.

Activities must **focus exclusively on civil applications** and **must not**:

- aim at human cloning for reproductive purposes;
- intend to modify the genetic heritage of human beings which could make such changes heritable (except for research relating to cancer treatment of the gonads, which may be financed);
- intend to create human embryos solely for the purpose of research, or for the purpose of stem cell procurement, including by means of somatic cell nuclear transfer;
- lead to the destruction of human embryos.

Proceso de Evaluación Standard



Resumen Criterios Evaluación (Instrumentos RIA, IA)

Research and innovation action (RIA)

Activities to establish new knowledge or to explore the feasibility of a new or improved technology, product, process, service or solution.

This may include basic and applied research, technology development and integration, testing, demonstration and validation of a small-scale prototype in a laboratory or simulated environment.

Innovation action (IA)

Activities to produce plans and arrangements or designs for new, altered or improved products, processes or services.

These activities may include prototyping, testing, demonstrating, piloting, large-scale product validation and market replication.

EXCELLENCE

- ✓ Clarity and pertinence of the **project's objectives**, and the extent to which the proposed work is ambitious, and goes beyond the state-of-the-art.
- ✓ Soundness of the proposed **methodology**, including the underlying concepts, models, assumptions, interdisciplinary approaches, appropriate consideration of the **gender dimension** in research and innovation content, and the quality of **open science practices** including sharing and management of research outputs and engagement of citizens, civil society and end users where appropriate.

IMPACT

- ✓ Credibility of the **pathways** to achieve the expected **outcomes and impacts** specified in the work programme, and the likely scale and significance of the contributions due to the project.
- ✓ Suitability and quality of the **measures to maximize expected outcomes and impacts**, as set out in the dissemination and exploitation plan, including communication activities.

QUALITY AND EFFICIENCY OF THE IMPLEMENTATION

- ✓ Quality and effectiveness of the **work plan**, assessment of risks, and appropriateness of the effort assigned to work packages, and the resources overall.
- ✓ Capacity and role of each **participant**, and extent to which the **consortium as a whole brings together the necessary expertise**.

Proposals aspects are assessed to the extent that the proposed work is within the scope of the work programme topic

Resumen Criterios Evaluación (Instrumento CSA)

Coordination and support actions (CSA)

Activities that contribute to the objectives of Horizon Europe. This excludes R&I activities, except those carried out under the 'Widening participation and spreading excellence' component of the programme (part of 'Widening participation and strengthening the European Research Area').

Also eligible are bottom-up coordination actions which promote cooperation between legal entities from Member States and Associated Countries to strengthen the European Research Area, and which receive no EU co-funding for research activities.

EXCELLENCE

- ✓ Clarity and pertinence of the **project's objectives**.
- ✓ Quality of the proposed coordination and/or support measures, including soundness of methodology.

IMPACT

- ✓ Credibility of the **pathways** to achieve the expected **outcomes and impacts** specified in the work programme, and the likely scale and significance of the contributions due to the project.
- ✓ Suitability and quality of the **measures to maximize expected outcomes and impacts**, as set out in the dissemination and exploitation plan, including communication activities.

QUALITY AND EFFICIENCY OF THE IMPLEMENTATION

- ✓ Quality and effectiveness of the **work plan**, assessment of risks, and appropriateness of the effort assigned to work packages, and the resources overall.
- ✓ Capacity and role of each **participant**, and extent to which the **consortium as a whole brings together the necessary expertise**.

Proposals aspects are assessed to the extent that the proposed work is within the scope of the work programme topic

The background image shows several industrial robotic arms in a factory environment. A large, semi-transparent orange circle is centered over the image, serving as a backdrop for the text. The text is in white, with the top part in a smaller font and the main title in a larger, bold font. The overall aesthetic is modern and industrial.

EVALUACIÓN DE PROPUESTAS
HORIZONTE EUROPA

**Conocimiento sobre cómo evaluar
una propuesta y por tanto, cómo
prepararla**

Puntuaciones de evaluación, umbral, y ponderación

- Se asigna la **puntuación** a cada uno de los **3 criterios**, no a los diferentes aspectos de cada criterio.
- **Rango de puntuación** a asignar a cada criterio: **0-5** en perfecta sintonía con los **comentarios del texto de la evaluación realizada**. Puntuación máxima de una propuesta: **15 puntos**.
 - Se usa el **rango completo de puntuación (0-5)**, haciendo uso de **medios puntos (0.5)**.
 - **Superar un threshold individual por criterio**, y un **threshold global por propuesta**, para poder considerar una propuesta susceptible de ser financiada, en base al presupuesto disponible. **Opciones del ranking:**
 - No aprobada.
 - Aprobada, sobre el threshold (no lo llega el presupuesto / en lista de reserva).
 - Aprobada, con invitación a preparación de Grant Agreement.
- El **threshold** por defecto para **cada criterio** individual: **3**.
- **Overall threshold** por defecto para toda la propuesta: **10**, salvo que se especifique diferente en el WP).
 - Para **Innovation actions**, el criterio **Impact** tiene un **peso de 1.5** a la hora de determinar el ranking.

For the **first stage** of a **two-stage procedure**, you only **evaluate** the **criteria Excellence and Impact**. The **threshold** for both individual criteria is **4**.

The level of **overall threshold** will be set at a level that ensures the total requested budget of proposals admitted to stage 2 is as close as possible to **three times the available budget**, and not less than two and a half times the available budget.

Interpretación del rango de puntuación

- 0** The proposal **fails to address the criterion** or cannot be assessed due to missing or incomplete information.
- 1** **Poor.** The criterion is inadequately addressed, or there are serious inherent weaknesses.
- 2** **Fair.** The proposal broadly addresses the criterion, but there are significant weaknesses.
- 3** **Good.** The proposal addresses the criterion well, but a number of shortcomings are present.
- 4** **Very Good.** The proposal addresses the criterion very well, but a small number of shortcomings are present.
- 5** **Excellent.** The proposal successfully addresses all relevant aspects of the criterion. Any shortcomings are minor.



Evaluación Criterio EXCELLENCE

Following questions are adapted to RIA and IA type of actions (ToA).

COMO NOS EVALUAN LOS OBJETIVOS DEL PROYECTO:

- Are they clear and pertinent to the topic?
- Are they measurable and verifiable?
- Are they realistically achievable?
- Is the proposed work ambitious and goes beyond the state-of-the-art?
- Does the proposal include ground-breaking R&I, novel concepts and approaches, new products, services or business and organisational models?
- Is the R&I maturity of the proposed work in line with the topic description?

Se tienen en cuenta que los avances más allá del SoTA se pueden interpretar en base a la tipología del Proyecto. Ej. Las expectativas son diferentes para proyectos RIA, para proyectos IA con TRLs más bajos, para proyectos IA con TRLs más altos.

Evaluating EXCELLENCE Criterion

Following questions are adapted to RIA and IA type of actions (ToA).

COMO NOS EVALUAN LA METODOLOGÍA CIENTÍFICA:

- Is the scientific methodology (i.e. the concepts, models and assumptions that underpin the work) clear and sound?
- Is it clear how expertise and methods from different disciplines will be brought together and integrated in pursuit of the objectives? if applicants justify that an inter-disciplinary approach is unnecessary, is it credible?
- Has the gender dimension in research and innovation content been properly taken into account?
- Are open science practices implemented as an integral part of the proposed methodology?
- Is the research data management properly addressed?
- For topics indicating the need for the integration of social sciences and humanities, is the role of these disciplines properly addressed?

Open Science

Open
Science

Open science es un enfoque en base a “open cooperative work” y “systematic sharing of knowledge and tools” tan pronto y tan amplio como sea possible, incluido “active engagement of society”.

OPEN SCIENCE PRACTICES incluyen:

- Early and open sharing of research (for example through **preregistration, registered reports**, pre-prints, or crowd-sourcing).
- Research output management including **research data management (RDM)**.
- Measures to **ensure reproducibility** of research outputs.
- Providing **open access to research outputs** (e.g. publications, data, software, models, algorithms, and workflows) through **deposition in trusted repositories**.
- Participation in **open peer review**.
- Involving **all relevant knowledge actors** including citizens, civil society and end users in the co-creation of R&I agendas and contents (such as citizen science).

Mandatory OS practices

- **Mandatory in all calls:** **Open access to publications**; **RDM** in line with the **FAIR principles** including data management plans; **open access to research data** unless exceptions apply (‘as open as possible as closed as necessary’); **access and/or information to research outputs** and tools/instruments for validating conclusions of scientific publications and validating/re-using data.
- Additional obligations specific to certain work programme topics.

Se evalúan con puntuación menor, si no están suficientemente “addressed”.

Recommended OS practices

- All open science practices beyond mandatory

Se evalúan con puntuación positiva, cuando están suficientemente “addressed”.

When OS practices (mandatory and recommended) are duly justified as not appropriate for the project, do not lower score for not addressing those practices

Detailed guidance for proposers and evaluators in the HE Programme Guide

Gender dimension in R&I content

Gender dimension

Responder a “gender dimension in research and innovation” significa tenerlo en cuenta durante el proceso completo de la Investigación y Desarrollo.

Under Horizon Europe the **integration of the gender dimension** into R&I content is **mandatory**, unless it is explicitly mentioned in the topic description as for example:

“In this topic the integration of the gender dimension (sex and gender analysis) in research and innovation content is not a mandatory requirement.”

¿Porqué es importante “gender dimension”? Porque aporta valor añadido a la investigación en términos de Excelencia, Rigor, Reproducibility, Creatividad, y oportunidades de negocio. Mejora la relevancia social de la I+D+i.

- Why do we observe differences between women and men in infection levels and mortality rates in the COVID-19 pandemic?
- Does it make sense to study cardiovascular diseases only on male animals and on men, or osteoporosis only on women?
- Does it make sense to design car safety equipment only on the basis of male body standards?
- Is it responsible to develop AI products that spread gender and racial biases due to a lack of diversity in the data used in training AI applications?
- Is it normal that household travel surveys, and thus mobility analysis and transport planning, underrate trips performed as part of caring work?
- Did you know that pheromones given off by men experimenters, but not women, induce a stress response in laboratory mice sufficient to trigger pain relief?
- Did you know that climate change is affecting sex determination in a number of marine species and that certain populations are now at risk of extinction?

Detailed guidance for evaluators and proposers is provided in the Horizon Europe Programme Guide

Social Sciences & Humanities (SSH)

*Social
Sciences and
Humanities*

Evaluar la contribución efectiva del expertise de las disciplinas “social science and humanities” como parte de la metodología científica del proyecto.

Cuando el Topic **require** la **integración de SSH**, la propuesta debe mostrar que se asignan roles con expertise en esas disciplinas, o justificar si no se consideran relevantes para el proyecto. Una propuesta no suficientemente justificada la contribución / integración de competencias en SSH recibe una puntuación menor.

¿Porqué integrar aspectos SSH?

Muchos desafíos sociales que deben abordarse a través de la investigación y la innovación son demasiado complejos para ser superados por una sola disciplina científica. Las soluciones técnicas son a menudo condiciones previas para nuevos resultados de políticas, pero en sí mismas son insuficientes para tener un impacto significativo. Los impactos sociales duraderos que buscan los formuladores de políticas a menudo dependen igualmente de los conocimientos de las ciencias sociales y las humanidades.

EJEMPLOS:

- **Social sciences** (law, ethics, psychology, political sciences...) are an essential component of the research responses to public health emergencies.
- **Economics and political science** are major components of projects focusing on socio-economic evaluation of climate-change impact.
- **Psychology, cultural considerations, ethics and religion** are essential to improve the support to palliative care patients.
- **Linguistics, cultural studies and ethics** are an important part of projects aiming to develop AI enhanced robotic system and improve human/robot interaction.
- **Economics and social sciences** are essential to devise effective measures of recovery after the Covid-19 pandemic.

Do no significant harm principle (DNSH)

European
Green
Deal

En línea con los objetivos European Green Deal, las actividades económicas no deben producir daño significativo a los 6 objetivos medioambientales (EU Taxonomy Regulation)

- La propuesta explicará como responde al principio de **DNSH**. En la sección de **research methodology** y sección **expected impacts of the project**, explicar que el Proyecto no llevará a cabo actividades que causen daño significativo a los 6 objetivos medioambientales (EU Taxonomy Regulation).
- Sin embargo, la evaluación “**will not score applications in relation to their compliance with the DNSH principle** unless explicitly stated in the work programme (currently, this is the case only for actions in the European Innovation Council Work Programme 2021)”.

The six environmental objectives :



Climate change mitigation



Sustainable use & protection of water & marine resources



Pollution prevention & control



Climate change adaptation



Transition to a circular economy



Protection and restoration of biodiversity & ecosystems

Evaluación Criterio Impacto

Following questions are adapted to RIA and IA type of actions (ToA).

¿Cómo evaluar “the proposed pathways towards impact”?:

- Is the contribution of the project towards the 1) **expected outcomes of the topic** and 2) the **wider impacts, in the longer term**, as specified in the respective **destinations of the WP**, credible?
- Are potential **barriers to the expected outcomes and impacts** identified (i.e. other R&I work within and beyond Horizon Europe; regulatory environment; targeted markets; user behavior), and mitigation measures proposed? Is any potential negative environmental outcome or impact (including when expected results are brought at scale, such as at commercial level) identified? Is the management of the potential negative impacts properly described?
- Are the **scale and significance** of the project’s contribution to the expected outcomes and impacts estimated and quantified (including baselines, benchmarks and assumptions used for those estimates)?
 - **‘Scale’** refers to how widespread the outcomes and impacts are likely to be. For example, in terms of the size of the target group, or the proportion of that group, that should benefit over time;
 - **‘Significance’** refers to the importance, or value, of those benefits. For example, number of additional healthy life years; efficiency savings in energy supply.

Evaluación Criterio Impacto

Following questions are adapted to RIA and IA type of actions (ToA).

¿Cómo evaluar “measures to maximise impact – Dissemination, exploitation and communication”? :

- Are the proposed dissemination, exploitation and communication measures suitable for the project and of good quality? All measures should be proportionate to the scale of the project, and should contain concrete actions to be implemented both during and after the end of the project.
- Are the target groups (e.g. scientific community, end users, financial actors, public at large) for these measures identified?
- Is the strategy for the management of intellectual property properly outlined and suitable to support exploitation of results?
 - If exploitation is expected primarily in non-associated third countries, is it properly justified how that exploitation is still in the Union's interest?

Evaluación Criterio Impacto

**Project's
pathway towards
impact**

...by thinking about the specific contribution the project can make to the expected outcomes and impacts set out in the Work Programme.

Work Programme outcome: "Innovative accessibility and logistics solutions applied by the European Transport sector"

Work Programme impact: "Seamless, smart, inclusive and sustainable mobility services"

INPUTS

**PROJECT'S
RESULTS**

**DISSEMINATION
& EXPLOITATION**

**PROJECT'S CONTRIBUTION TO
THE EXPECTED OUTCOME**

**PROJECT'S CONTRIBUTION TO
THE EXPECTED IMPACT**

HE grant,
human
resources,
expertise, etc.

Successful large-scale
demonstration trial with 3 airports of
an advanced forecasting system for
proactive airport passenger flow
management

Other project results

Implementation

At least 9 European
airports adopt the advanced
forecasting system that was
demonstrated during the
project

Other expected outcomes

Effects

Increase max. passenger
capacity by 15% and
passenger average throughput
by 10%, leading to a 28%
reduction in infrastructure
expansion costs

Other expected impacts

Gestión Propiedad Intelectual (PI)

*Cada beneficiario de Horizonte Europa hará todo lo posible por **explotar los resultados que posee**, o hacer que los explote otra entidad jurídica, en particular mediante la transferencia y la concesión de licencias de resultados. A este respecto, los beneficiarios están **obligados a proteger adecuadamente sus resultados, si es posible y justificado**, teniendo en cuenta las posibles perspectivas de explotación comercial y cualquier otro interés legítimo.*

The provision of a **results ownership list** is mandatory at the end of a project.

¿Cómo evaluar la estrategia de gestión de la PI en la propuesta?:

- Should be comprehensive and feasible and should include protection measures whenever relevant.
- Should be commensurate with the described pathways to outcomes and impacts and therefore underpins the ‘credibility’ of these pathways.
- Should consider ‘freedom to operate’ regarding the background owned by consortium members and/or third parties outside the consortium.
- Should give due thought to balancing between publication of results and plans to protect IP, e.g. in terms of timing the respective activities, involvement of IP experts.
- If exploitation is expected primarily in non-associated third countries, it must include justifications on how that exploitation is still in the Union’s interest.
- if required in the call conditions, it must consider additional exploitation obligations in relation to IP.

Evaluación Criterio Implementación

Following questions are adapted to RIA and IA type of actions (ToA).

¿Cómo evaluar el Work Plan propuesto, la distribución de esfuerzo, y la asignación de recursos?:

- Is the work plan of good quality and effective?
- Does it include quantified information so that progress can be monitored?
- Does it follow a logic structure (for example regarding the timing of work packages)?
- Are the resources allocated to the work packages in line with their objectives and deliverables?
- Are critical risks, relating to project implementation, identified and proper risk mitigation measures proposed?

No se penaliza a los aplicantes que no proven un desglose detallado de costes, dado que no se require este tipo de detalle. Excepción: en caso de esquema lumps sums, se require una table detallada de presupuesto.

Evaluación Criterio Implementación

Following questions are adapted to RIA and IA type of actions (ToA).

¿Cómo evaluar la calidad de los participantes y el consorcio as a whole?:

(Información importante del role de los participantes individuales y su experiencia previa se incluye en Part A).

- Does the consortium match the project's objectives, and bring together the necessary disciplinary and inter-disciplinary knowledge.
- Does the consortium include expertise in open science practices, and gender aspects of R&I, as appropriate?
- For topics flagged as SSH relevant, does the consortium include expertise in social sciences and humanities?
- Do the partners have access to critical infrastructure needed to carry out the project activities?
- Are the participants complementing one another (and cover the value chain, where appropriate)
- In what way does each of them contribute to the project? Does each of them have a valid role, and adequate resources in the project to fulfil that role (so they have sufficient operational capacity)?
- Is there industrial/commercial involvement in the project to ensure exploitation of the results?

Las publicaciones previas de los participantes, en particular journal articles, se esperan que sean Open Access y que existan datasets FAIR y 'as open as possible, as closed as necessary'. Se evalúa positivamente si está suficientemente respondido.

Cuestiones adicionales de evaluación

Los informes de evaluación incluyen:

- La parte principal del Informe de Evaluación recoge los 3 **criterios evaluation** incluyendo las puntuaciones y los comentarios de evaluación.

Cuestiones adicionales en evaluaciones Horizonte Europa: (Vinculadas a consideraciones del procedimiento de evaluación)

- Scope of the application
- Additional funding
- Use of human embryonic stem cells (hESC)
- Use of human embryos (hE)
- Activities not eligible for funding
- Exclusive focus on civil applications
- Do not significant harm principle
- Artificial Intelligence

Cuestiones adicionales – Inteligencia Artificial

- Los expertos deben responder una pregunta adicional como parte de sus evaluaciones individuales sobre si las actividades propuestas **involucran el uso y/o desarrollo de sistemas y/o técnicas basadas en IA**.
- Si responde "sí" a esta pregunta, debe **evaluar la solidez técnica del sistema de IA propuesto** como parte del criterio de **excelencia** (si corresponde).
- Además, su respuesta a esta pregunta nos ayudará a realizar un **seguimiento adecuado** de cualquier aspecto relacionado con la **Inteligencia Artificial** en los proyectos financiados por Horizonte Europa.
- *Además, tu respuesta a esta pregunta nos ayudará a realizar un adecuado seguimiento de cualquier aspecto relacionado con la Inteligencia Artificial en los proyectos financiados por Horizonte Europa.

AI-based systems or techniques should be, or be developed to become:

- **Technically robust, accurate and reproducible**, and able to deal with and inform about possible failures, inaccuracies and errors, proportionate to the assessed risk posed by the AI-based system or technique.
- **Socially robust**, in that they duly consider the context and environment in which they operate.
- **Reliable and function as intended**, minimizing unintentional and unexpected harm, preventing unacceptable harm and safeguarding the physical and mental integrity of humans.
- Able to provide a suitable explanation of its **decision-making process**, whenever an AI-based system can have a significant impact on people's lives.



THANK YOU

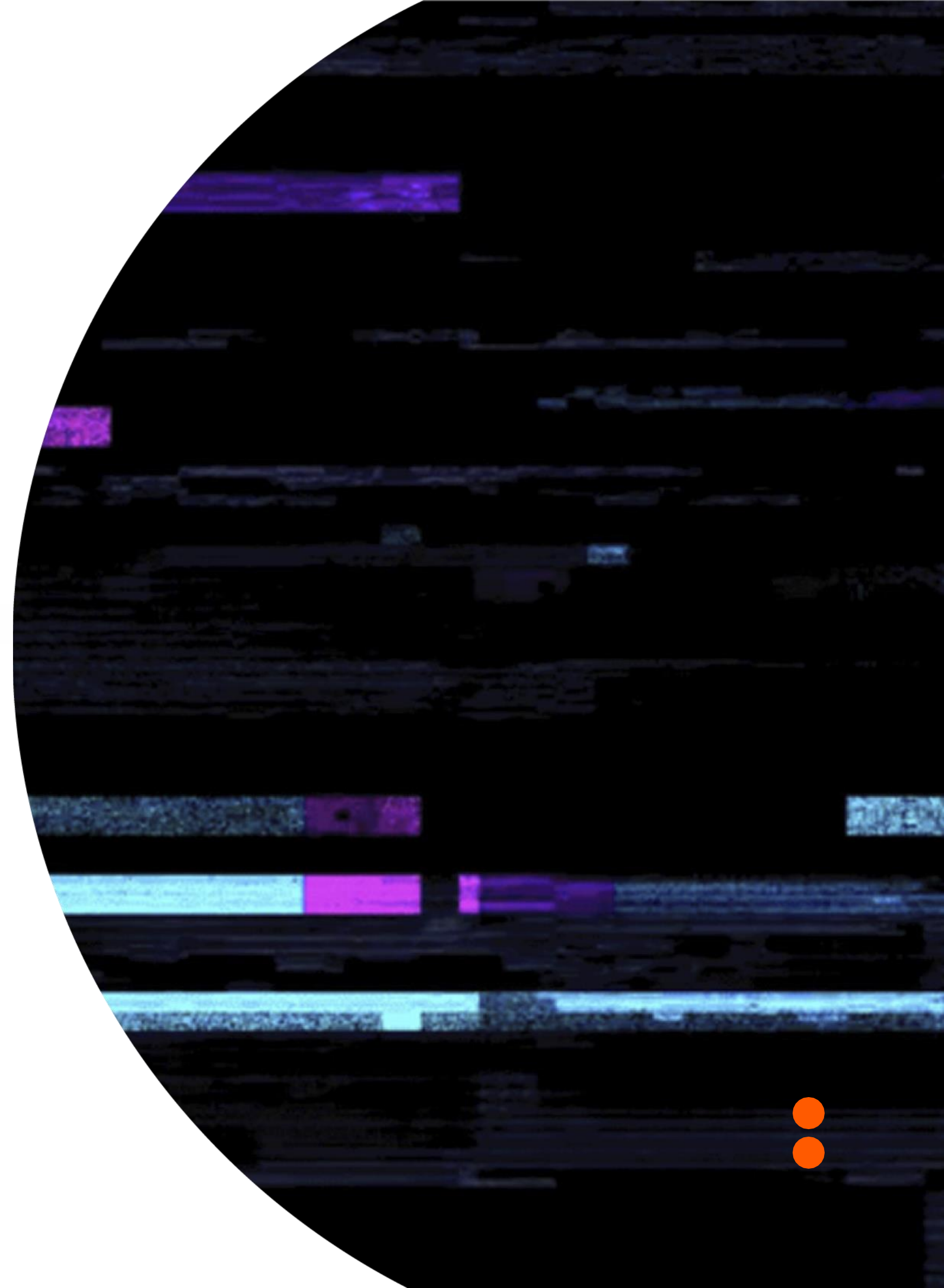
GRACIAS
ARIGATO
SHUKURIA

ESKERRIK
ASKO.

TASHAKKUR ATU
SUKSAMA
MEHRBANI
BOLZİN
MERCİ

DANKSCHEEN
JUSPAXAR
GOZAMASHITA
EPCHARISYO
KHAUSPUSANVICA
I MANKI
YAGHANYELRY
TASHAKKUR ATU
SUKSAMA
MEHRBANI
BOLZİN
MERCİ

BIYAN
SHUKRIA



Dra. Estibalitz Delgado

Fundación TECNALIA RESEARCH & INNOVATION

Parque Científico y Tecnológico de Bizkaia

Astondo Bidea, Edificio 700.

E-48160 Derio (Bizkaia)

TELÉFONO

946 430 850

Estibalitz.delgado@tecnalia.com