

## Developing raw materials into a major strength for Europe Bilbao 18/12/2019

EIT RawMaterials GmbH, Berlin, Germany



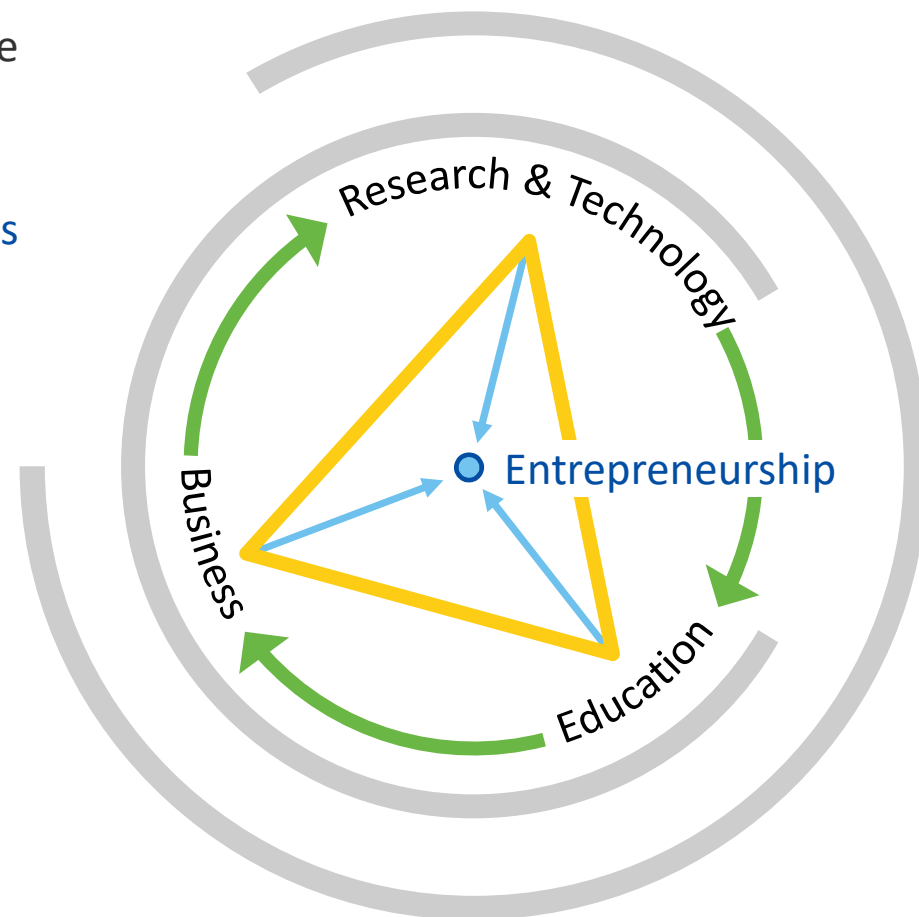
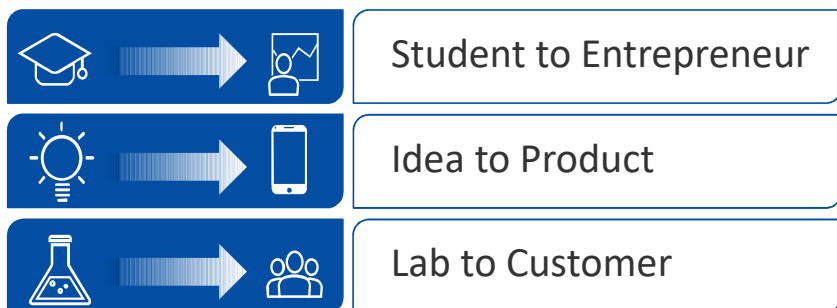
EIT RawMaterials is supported by the EIT,  
a body of the European Union

# EIT (European Institute of Innovation and Technology)

The EIT is an EU body that enhances Europe's ability to innovate by nurturing young entrepreneurial talent and supporting new ideas through the Innovation Communities.

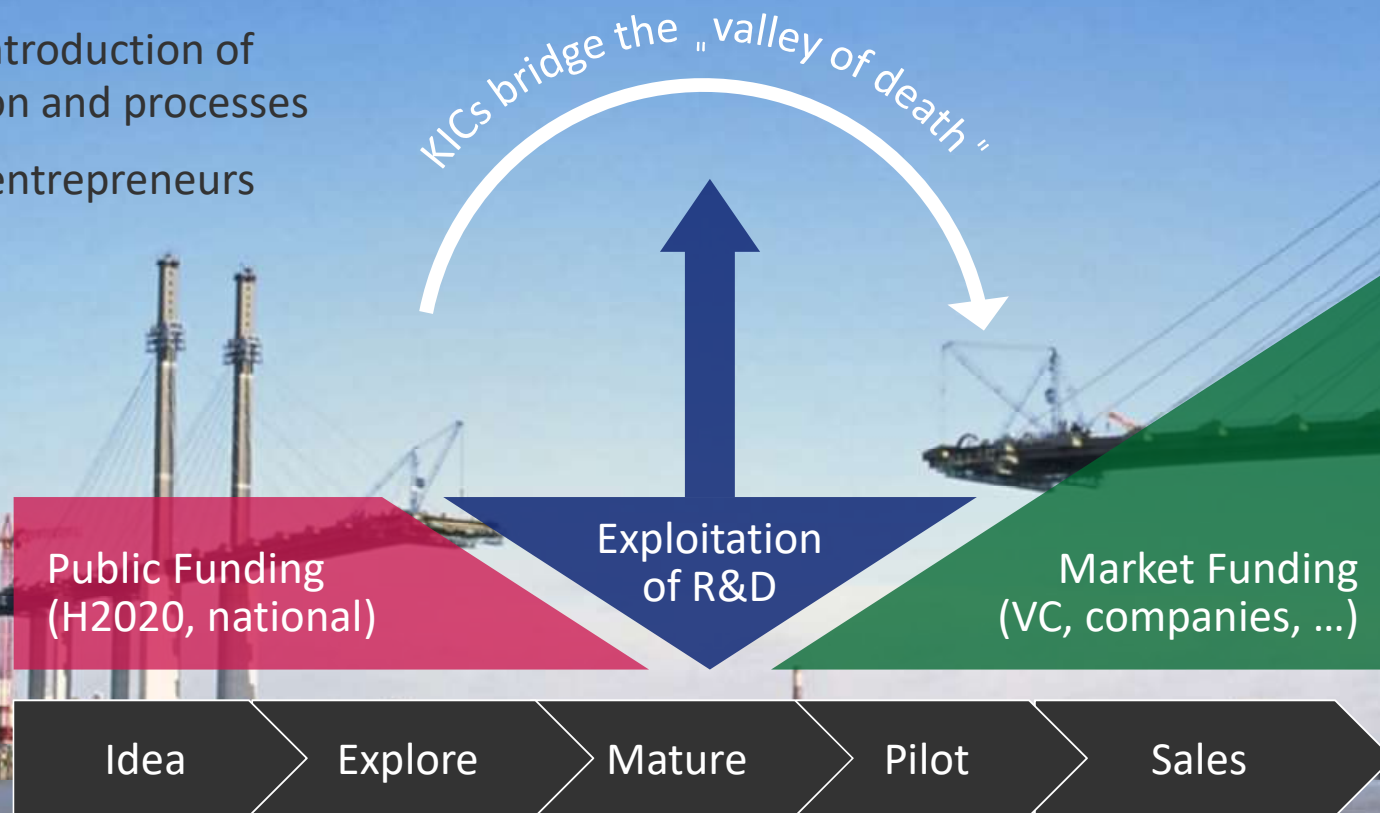
The EIT is the first EU initiative bringing together the three sides of the 'knowledge triangle': Business (companies and SMEs), Higher Education Institutions and Research Centres.

The EIT aims to increase the cooperation and integration between education, business and research to facilitate the transition from:



# What is the purpose?

- Bridging the valley of death
- Market introduction of production and processes
- Educate entrepreneurs

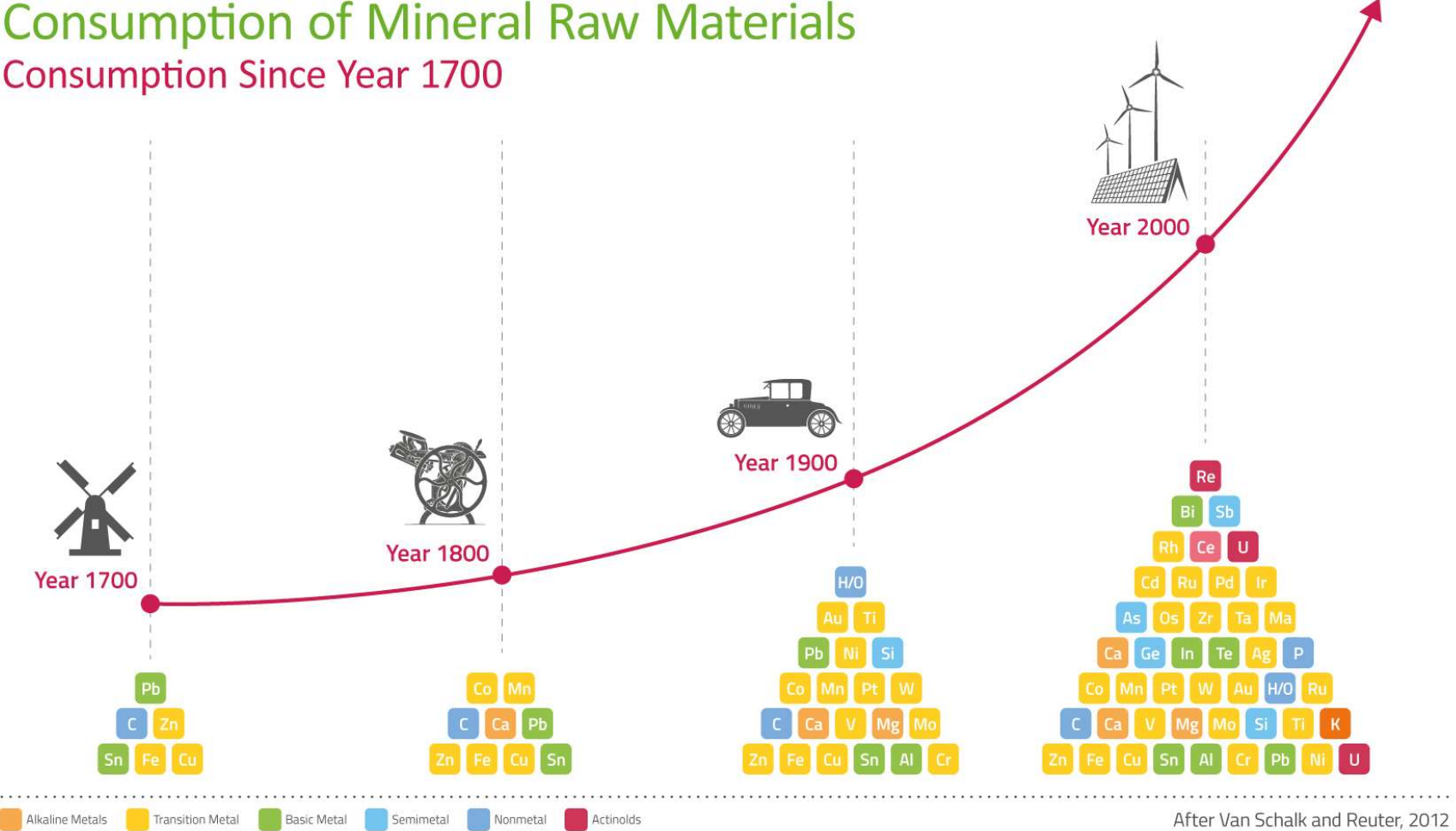


# EIT Innovation Communities



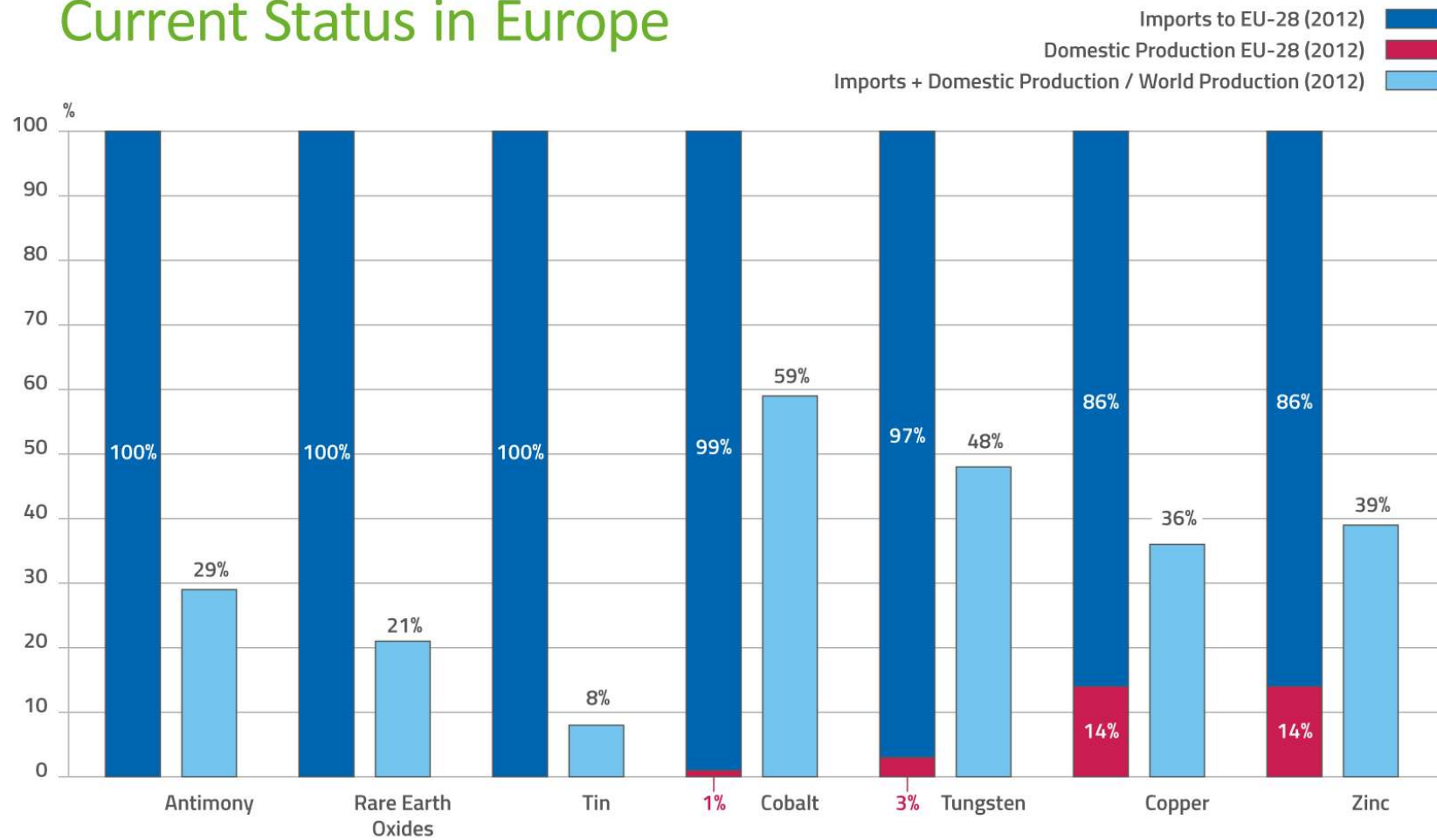
# Consumption of Mineral Raw Materials

## Consumption Since Year 1700





# Current Status in Europe



# A pan-European Partner Network

- Coverage of the entire raw materials value chain
- World's largest community in the raw materials sector
- Over 120 core and associate partners and 180+ project partners
- 22 countries
- Six Co-location Centers (Innovation Hubs) across Europe
- Headquarter in Berlin, Germany

- Countries covered by EIT RawMaterials
- EU countries
- Innovation Hub (Co-Location Center)
- RIC (Regional Innovation Center)
- RIS HUB (Regional Innovation Scheme)



# Partners

## Industry





# Partners

## Research and Technology Organisations



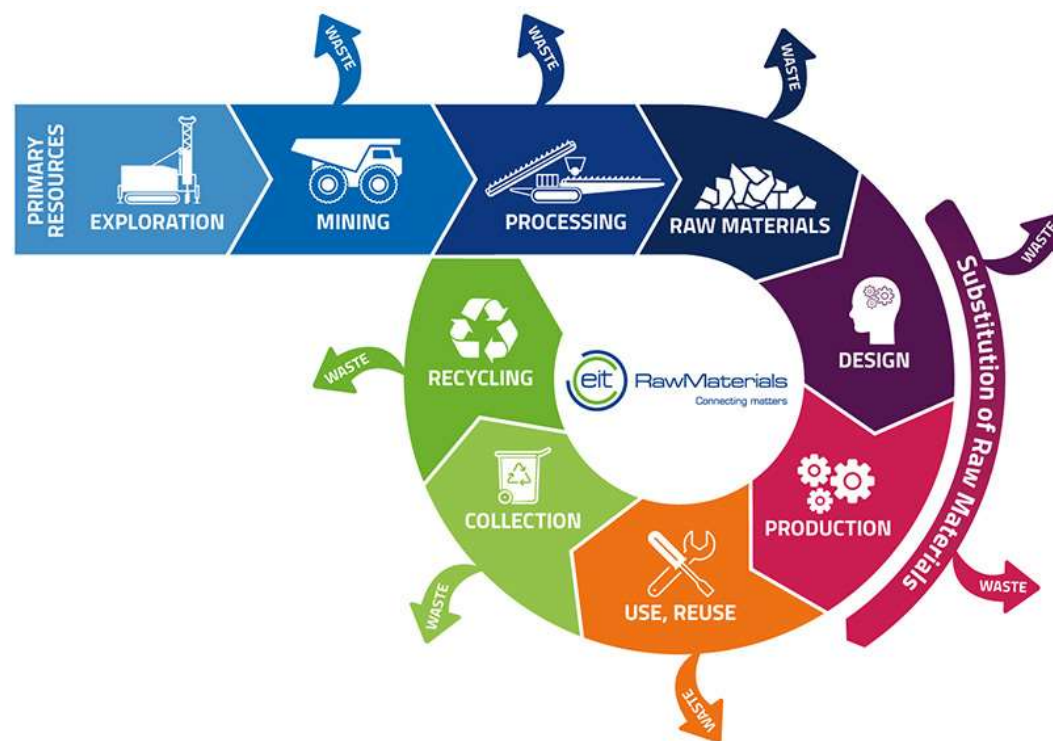
# Partners

## Universities



# EIT RawMaterials Innovation Themes

- **Exploration** and raw materials resources assessment
- **Mining** in challenging environments
- Increased **resource efficiency** in mineral and metallurgical processes
- **Recycling** and material chain optimisation for end-of-life products
- **Substitution** of critical and toxic materials in products for optimised performance
- Design of products and services for the **circular economy**



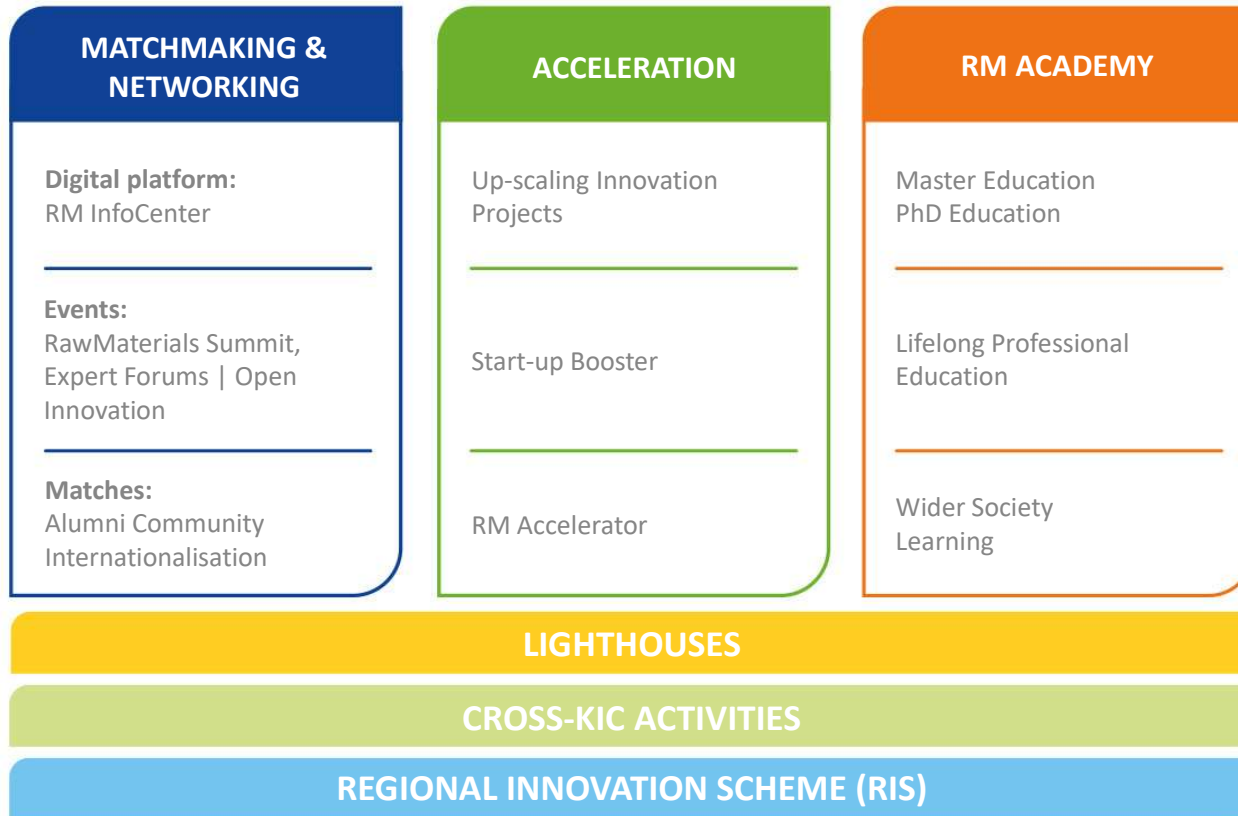


## Circular Economy Close the Loop/s Metals example

Some circularity limitations are only evident on a product level



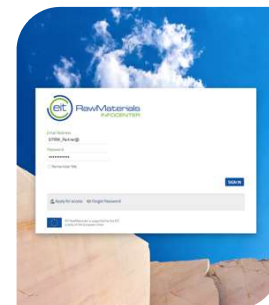
# Matchmaking & Networking, Acceleration, Education Activities





# Matchmaking & Networking

- **InfoCenter:** A digital collaboration & networking platform for partners that offers the following:
  - Networking, collaboration, sharing of news and exchange ideas
  - Get the latest news on the community and register for the events
  - A data mining & intelligence platform
- **Open Innovation Events:** Networking activities focused on global challenges and value chain integration as well as in-depth thematic events
- **RawMaterials Summit** Global annual conference which includes technical sessions, investors forum, career fair and a trade show.
- **Alumni Community** offers networking, careers and mentoring opportunities to individuals and organisations.
- **Internationalisation** activities focus on global outreach expanding towards international regions of strategic importance taking into account synergies with various EU actions.





EIT RawMaterials is supported by the EIT,  
a body of the European Union

**THANK YOU!**

[Ignacio.Calleja@eitrawmaterials.eu](mailto:Ignacio.Calleja@eitrawmaterials.eu)

[www.eitrawmaterials.eu](http://www.eitrawmaterials.eu)

